



# TURN NORTH



Monthly Newsletter of the Northland Woodturners, Kansas City MO

November 2006

## Nov. 2 Meeting to Feature Kent Townsend *Symposium was Great Fun!*

Kent is going to show us the ins and outs of turning a pepper mill. As with his other demos, you won't find this one to be a grind! Symposium was a good time had by all. Both presenters were faces fresh to our area and both expressed their appreciation of the group, hoping to be invited back for future events. The raffle was full of goodies and capped by the raffle of a Jet mini-lathe donated by Overland Tool North. Thanks to all who donated, supported, and otherwise participated.

**The chapter meets on the first Thursday of each month from 7-9 pm at Overland Tool North, 1404 Gentry, North Kansas City MO 64116.**

Their phone number is (816) 268-4304. Off Missouri Hwy 9, turn east & go 4 blocks on 14th St.—Off I-35, take the 16th St. exit, go west to Gentry & south to the intersection of 14th St.

For a map, visit: <http://maps.google.com/maps?q=1404+Gentry,+North+Kansas+City,+MO&iwloc=A&hl=en>

### October Highlights

The editor received no news from the meeting last month, so we'll have to catch it up in the next newsletter.

Two items that were to be discussed had to do with the need for a new treasurer for 2007 and a new secretary/newsletter editor for 2007 as well.

Chip provided a substantial tutorial on sharpening. Thanks for your willingness to share funda-“metals”.

### Coming Attractions

Nov 2, '06 .....	Kent Townsend, Pepper Mill
Dec 7, '06 .....	Holiday Fest
Dec 7, '06 .....	Ornament Challenge Due
Jan 4, '07 .....	Hands-On Night
Feb 1, '07 .....	???

**Website: <http://www.NorthlandWoodturners-KC.org>**

### 2006 Officers

Marci Eigenschenk, President

(816) 734-4248 –

[President@NorthlandWoodturners-KC.org](mailto:President@NorthlandWoodturners-KC.org)

Dennis Avondet, Vice President & Webmaster

(816) 734-4248 –

[VicePresident@NorthlandWoodturners-KC.org](mailto:VicePresident@NorthlandWoodturners-KC.org)

Dean Thomas, Secretary & Newsletter Editor

(816) 421-5781 –

[Secretary@NorthlandWoodturners-KC.org](mailto:Secretary@NorthlandWoodturners-KC.org)

Bill Wheeler, Treasurer

(816) 587-8385

Frank Hoog, Librarian

(816) 585-4964 –

[Librarian@NorthlandWoodturners-KC.org](mailto:Librarian@NorthlandWoodturners-KC.org)

Chip Siskey, Advisor

Kent Townsend, Advisor

**Join the chapter's Yahoo Group:**

**<http://groups.yahoo.com/group/TurnNorthKC/>**

## Member of the Month



The October Member of the Month is Larry Cory. Larry's been turning for about four years. He's been a NWT member for about three years. Larry relates that it was an article in a wood magazine got him started. It's amazing what starts the turning "juices" flowing, isn't it? He says that he has no favorite wood; he loves it all. He feels a particular attraction to segmented items. He likes the challenge and the creative opportunities that segmenting brings.

Currently, he involved in some other woodworking activities. He shared: "I love working in my shop. I am currently building two old style wood wagons for Christmas presents."

I hope we can convince him to bring one in to share during show and tell. No, it's not lathe work, but the wheels turn! Right, Larry?

## Member of the Month



The November Member of the Month is Randy Hawn. Randy doesn't remember a time when he *wasn't* interested in turning. It's only been a couple of years, however, since he actually put lathe chisels to wood. Randy has been a member of Northland Woodturners for only nine months or so and has been a regular participant in the show and tell/instant gallery portion of our meetings. He says he really does not have a "favorite wood" to turn, but pretty much will work with whatever he can get between centers.

Congratulations to both of this edition's "Members of the Month" for the Northland Woodturners Chapter.

### ***IMPORTANT NORTHLAND WOODTURNERS LIBRARY NEWS***

**Dr. Frank Hoog, our illustrious librarian, asks that if you have any NWT Library books or videos, please bring them back to the meeting, or to call him and let him know what you have, please. Your cooperation is very much needed in his effort to inventory our collection. We don't want to have to replace or duplicate things. Check your shelves, please, for any strays. Thanks in advance!!**



## The President's Corner

Ramblings from chapter president, Marci Eigenschenk

There's lots of stuff going on in our little corner of the woodturning world.

We all had a great time at the symposium a couple of weeks ago. There was good response from those present to our two presenters, Rob Wallace from Ames, Iowa, and Andy Hilton from Aurora, Missouri. The four sessions were meaty and a nice range of woodworking knowledge and experience was offered. The auction was fun as always and a good amount of money was raised to help the club continue to grow. The egg cup challenge was fun with some new faces up there this year. Eight turners tried their hand at duplicating our target egg cup, but only one could be the winner. Congrats to Chip Siskey. Good eyes, Chip!

We have some issues that we need to talk about at the meeting in November. Please be thinking about people to fill a couple of slots on the board for 2007. Bill Wheeler is retiring from the board after many years of service. Dean Thomas is evidently going back to work on night shift and so probably won't be participating much if at all at our regular meetings. Ron Ford has been serving as our photographer for the last couple of years. He also is going to "take a break" from service. Bottom line? We need to find volunteers to serve as treasurer, secretary/newsletter editor, and photographer. If you have the skills and desire to serve in one of those slots, please contact me as soon as possible. We'd love to have, and need to have, some new people on the board. Dennis and I are willing to serve again, if you're willing to have us. We'll talk about all of this on November 2.

We're starting to plan for the 2007 calendar. Part of that is looking for demonstrators or presenters. Are you willing to share one of your "pet projects" and give back a little of what you've received? We're looking for willing folks, not professional turners, friends. If you're overly intimidated, but have something that you'd like to see demonstrated at one of our meetings, tell me or VP Dennis Avondet what you have in mind. We'll see if we can find someone to share in that area.

The December meeting is our annual Holiday Party. Thanksgiving, Christmas, Hannukkah, or whatever is

your holiday of choice. As with last year, bring your holiday ornaments and we'll vote at the break and give prizes for the best of show. More about that in our next newsletter.

I want to again thank Steve Dinwiddie and Overland Tool for their support of this chapter. Steve's willingness to make sure we have a great meeting space is absolutely vital to the health of the organization. I hear about many clubs who struggle with finding good spaces, willing or even reasonable hosts, and shake my head at our good fortune. The donation of the Jet 1014 for the auction was such a wonderful surprise. Be sure to let Steve know how much his support and that of Overland Tool means to you and to us.

Planning Ahead Department: We're going to have a different sort of meeting in January. It's going to be "Hands-On Night". Do you have tools that you just can't seem to get to work the way you think they should? This is the night for *you!* Bring them in. Plan on being here a little early so we can set up a space for these special tools and our many knowledgeable turners (and Steve the tool guy!) can have a look at them and prepare an answer worthy of your tools! We think it's going to be a fun and entertaining time, as well as one that may solve some mysteries.

Don't forget to get your AAW dues in early, like before Jan. 1, 2007. If your renewal or first time subscription is not received by Jan. 1, your name won't appear in the directory. And, if your envelope is postmarked after Jan. 1, there will be a \$5 late fee assessed. They are trying to get everyone onto a different schedule than before, trying to work out the financial kinks they've had in past years. And as an incentive to be both timely and to use the new online subscription software, timely online renewals or subscriptions are eligible for a special drawing: the lucky winner will receive a brand new Powermatic 3520b lathe, just like our chapter's lathe! Your chances are about 1 in 3500 or so, but hey, it's a new lathe! Renew early

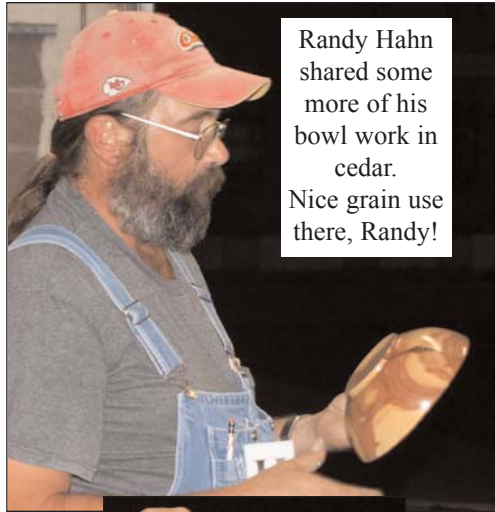
Enough ramblings for now. There's more, but if I tell you now, what will we talk about at the meeting?



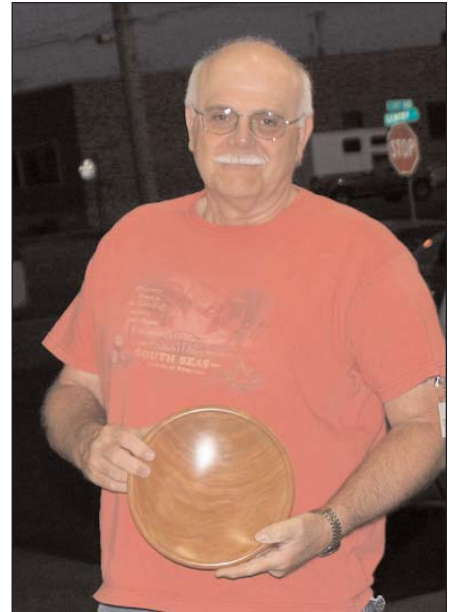
# The October Gallery



Al Szalay, not only doing zen  
woodwork, but talking to the projects!



Randy Hahn  
shared some  
more of his  
bowl work in  
cedar.  
Nice grain use  
there, Randy!



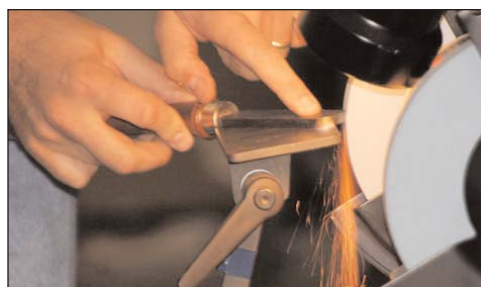
Nice bowl from Steve Trauthwein!



## Chip's a Sharp Kind of Guy!



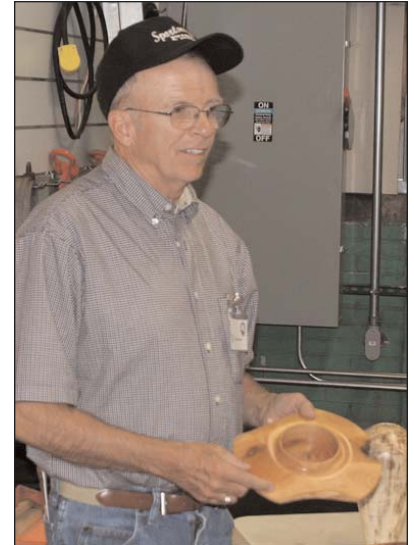
Chip Siskey's presentations on  
sharpening are always a welcome  
addition at any gathering.



## The October Gallery Projects



Kent Townsend brought us another nice bowl, along with a turned box for a special purpose. They were finished with lacquer.



Wayne Clevenger brought in a classy satellite bowl.



David Bartlett brought in this walnut bowl and another great little ball'n'cup game.



In addition to presenting, Chip Siskey also brought a multi-species walking stick.

**We're always looking!!  
Can you bring some give-away tops to  
supply the Big Top on the counter at  
Overland Tools North? We'd appreciate it!!**



*Read a good woodturning-related book lately? Watched a good wood video?*

*Willing to write a short review?*

*Got an idea for an article or a need for some information that you think would interest everyone in the chapter? Contact Dean Thomas and let's see what we can do!*

*Remember, we want to publicize your favorite tips. Talk to your friendly newsletter editor for details, or to our illustrious VPrez to demo it at one of the monthly meetings.*

*Please return any NWT Library materials that you have at home. Thanks!!!!*

## Chapter Sponsors and Supporters



**Steve Dinwiddie**  
 Manager, North Kansas City  
 Nextel I.D. #140\*23\*28580  
 Cell (816) 215-3334

1404 Gentry N.K.C., MO 64116  
 (816) 268-4304  
 Toll Free (888) 850-8665  
 Fax (913) 599-3995  
[steve.dinwiddie@overlandtool.com](mailto:steve.dinwiddie@overlandtool.com)

Machinery & Tools  
 Sales-Service  
 Sharpening

*Ask about our new, state-of-the-art Sharpening Center!*



**Woodchips**  
 by Chip

Custom Woodturning  
 Woodturning Instruction

Robert "Chip" Siskey  
[Woodchipsbychip@yahoo.com](mailto:Woodchipsbychip@yahoo.com) (816) 858-3080



**WOODCRAFT®**  
 Helping You Make Wood Work®

8645 Bluejacket Rd  
 Lenexa, KS 66214  
 (913) 599-2800  
 M-F 9-9 · Sat 9-6 · Sun 9-5

Are you signed up for our email specials??

**CRAFT SUPPLIES USA**  
 — THE WOODTURNERS CATALOG —

1287 E. 1120 S.  
 Provo, UT 84606  
 800-551-8876  
 M-F, 7am-6pm, MST

Check out the Club Specials every month.  
 Enter "NorthlandWoodturners" when asked for club name.



816-892-3398  
 800-456-2148  
 Fax 816-753-0250

A Landmark Company  
 Since 1880

3001 Southwest Boulevard  
 Kansas City, MO 64108-3616  
[www.SchutteLumber.com](http://www.SchutteLumber.com)

**10% discount on lumber and supplies to all Northland Woodturners Chapter members when you present your membership card!**

