

Turn North



The Monthly Newsletter of the Northland Woodturners

www.northlandwoodturners-kc.com

August 2013

2013 Officers

Dave Halter, President
(816) 233-9606
Herknav@ponyexpress.net

David Bartlett, Vice President
(816) 331-5664
dabartle23@yahoo.com

Harlan H. Henke, Secretary & Newsletter Editor
(816) 279-3610
lhjhah@stjoelive.com

Chip Siskey, Treasurer
(816) 858-3080
woodchipsbychip@yahoo.com

July Program

Our July meeting was postponed one week, to the 11th, because of Independence Day. Ladles were the topic of the meeting. Harlan Henke demonstrated the techniques he uses; multi-axis turning for the handles and using a jam chuck for hollowing out the bowl. The bowl starts out as a sphere and Harlan showed a method that uses a little math to get a good start. A sketch explaining this process is included with this newsletter. He also successfully demonstrated why you should always turn the lathe off before moving your lamp.

Chapter meetings:

First Thursday of each month, 7-9 pm at the old Stephenson's Apple Orchard restaurant near 56th Street and I-29. The address is: **5755 NW Northwood KC Mo. 64151**

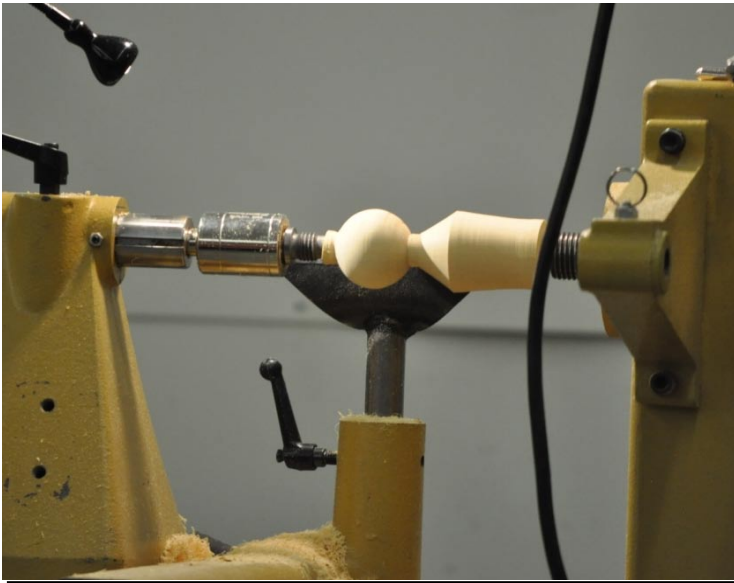
Coming Attractions

August 1bowl with dimpling
September 5 tba

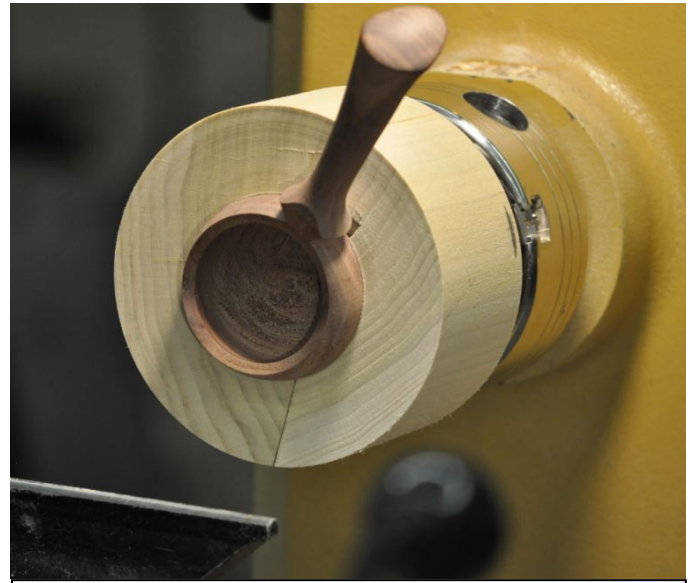
Newsletters on the chapter website:
<http://northlandwoodturners-kc.com>



Four finished ladles. The walnut piece is ready to mount in a jam chuck to hollow out the bowl.



Step 1: Turn a sphere on one end of the blank.
 Step 2: Turn the handle, leaving it a little thick.
 Step 3: Reposition the drive center on the handle end about 3/8" and offset turn the handle.



Step 4: Mount the sphere into a jam chuck and hollow out the bowl.

VP David Bartlett opened the meeting.

We welcomed visitor Brian Irvan.

Librarian Larry Settle announced there have been some new donations to the library. He also pointed out that there was a separate sign out sheet for each video.

Chip reported that he delivered the last plug order. David reminded everyone that they earn Plug Bucks when they help with the plugs. He discussed a Saturday plug turning workshop. Chip volunteered to put on a sharpening session on the same day.

David presented a couple of pens that the young lady who competed in the Skills USA national contest gave us in appreciation for our loaning her our Jet mini-lathe. We thanked Kent again for handling the logistics.

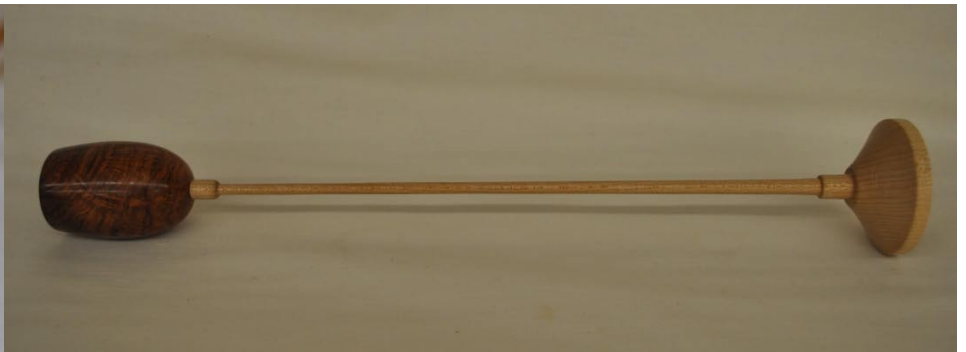
A demo weekend with a professional turner was discussed again. Dennis Liggett and Robin Costello are the potential candidates.

Bruce Stevenson brought a picture of a huge burl for sale. Contact Bruce if you're interested.

We had our Show & Tell followed by a short break and our raffle.

August Meeting

Jerry Darter will be our guest presenter. Jerry will demonstrate a texturing technique where he dimples a bowl then relieves the dimples after further turning and sanding. Jerry always puts on excellent demonstrations so you don't want to miss this one.



James Tate brought this long stem goblet with a mesquite burl bowl.

Jacob Metzinger brought these two Wall Street acrylic pens.



Two pens donated to club in appreciation of the use of our lathe by the young lady who participated in Skills USA national contest.

Tooth pick holder by Larry Cory



Damage Control Plugs


Thanks to everyone who's helped with our plug orders. Our inventory is getting low so we will be asking for help getting restocked. There will be boxes of blanks at the next meeting. Please consider taking a box home and turning them by the following meeting.

Here's a table with the plug dimensions for reference. It's also on the Club News tab of the club website at <http://www.northlandwoodturners-kc.com/Plus%20Size%20and%20Cut%20List.mht>

Basically, the plugs are all truncated cones with the large diameter on one end connected to the small diameter on the other end with a straight taper.

Plug	Lg Dia	Length	Sm Dia
#1	1 1/2	7	5/8
#2	2 1/4	4	1 1/4
#3	3 1/4	3 1/2	2 1/8
#4	4 1/4	5 3/4	2 3/4
#5	6 1/2	6	4 3/4

Chapter Sponsors and Supporters



**8645 Bluejacket Rd
Lenexa, KS 66214
(913) 599-2800
M-F 9-9 · Sat 9-6 · Sun 9-5**

Are you signed up for our email specials??




Woodchips
by Chip

**Custom Woodturning and
Woodturning Instruction**

Robert "Chip" Siskey
Woodchipsbychip@yahoo.com (816) 858-3080



**Jeff Edemann, Store Manager
4243 S Noland Rd Independence, MO 64055
816-373-1710**



**1287 E. 1120 S.
Provo, UT 84606
800-551-8876
M-F, 7am-6pm, MST**

Check out the Club Specials every month.
Enter "NorthlandWoodturners" when asked for club name.



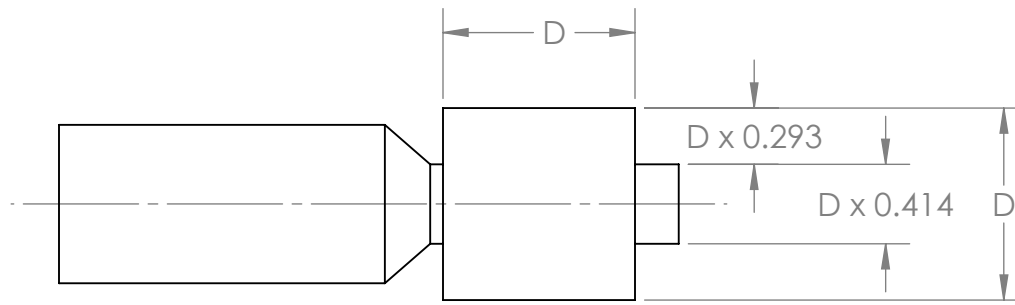
**816-892-3398
800-456-2148
Fax 816-753-0250**

3001 Southwest Boulevard
Kansas City, MO 64108-3616
www.SchutteLumber.com

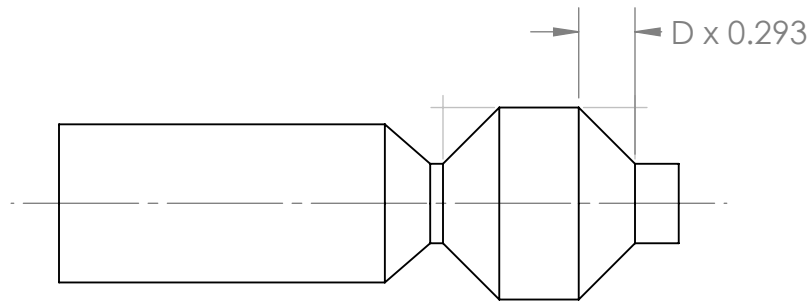
10% discount on lumber and supplies to all
Northland Woodturners Chapter members when you present your
membership card!

REMINDER:

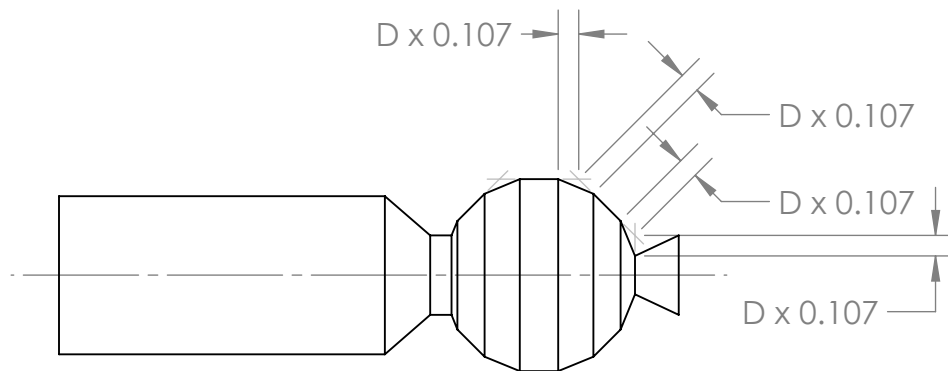
The annual dues for 2013 are \$10.
Checks can be made payable to
Northland Woodturners.



Turn a cylinder with its length the same as its diameter. The tenon diameters should be the large diameter times 0.414.



Make a mark 0.293 times the large diameter from each end and turn a straight line connecting it with the edge of the tenon (both ends).



From each of the new edges, mark a line 0.107 times the large diameter on each side. Connect those two marks with a straight line.

Now round over the new edges.