

Turn North



The Monthly Newsletter of the Northland Woodturners

www.northlandwoodturners-kc.com

July 2019

2019 Officers

David Bartlett, President
(816) 331-5664
dabartle23@yahoo.com

Danny Smith, Vice President
(816) 720-3781

Email

Andy Brundage, Secretary
(816) 305-32238
andybrun53@gmail.com

Leland Finley, Newsletter Editor
(816) 830-4702
lelandfinley7@gmail.com

Chip Siskey, Treasurer
(816) 858-3080
woodchipsbychip@yahoo.com

SHOW and TELL



Mel Bryan-Lathe Knife

Chapter Meetings:

First Thursday of every month, 7-9 pm.
Our ADDRESS: We're south of Zona Rosa just off NW Prairie View Rd., just east of the N-S drive beside the barber shop; (**Northeast Corner**) in the strip mall across from the BP station on Prairie View RD.

Coming Attractions

Newsletters on the Chapter Website:
<http://northlandwoodturners-kc.com>

Event Information:

Interested in
Raleigh AAW Symposium?
Check out their website below:

<https://www.woodturner.org/page/2019RaleighMain>



Chip-Maple Burl Lacalite Bowl



Pete Stacy-Small spalted lidded Bowl



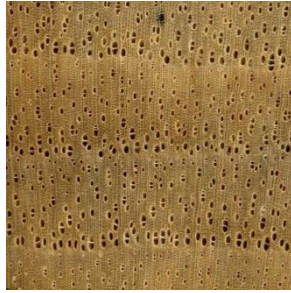
June 2019 Northland Woodturners Meeting

June 2019 members came to see a special turning demonstration for a “Captive Ring Goblet” by one off the Master Turners in the club. Before the special, members were treated to some great Show and Tell projects by three of the Northland Woodturners members.

The newsletter editor was missing so Secretary Andy Brundage did the honors to capture some great pictures for the Newsletter.

The newsletter Editor would like to remind members who sign in for Show and Tell to be sure he can identify your specialties (*which in most cases*) are unique and deserve the recognition.

Diospyrus virginiana – Persimmon



In the 17th century, speaking of persimmon fruit, Captain John Smith near Jamestown said, “If it be not ripe, it will draw a man’s mouth awry with much torment.” If you’ve ever been tricked into eating or accidentally gotten an unripe persimmon you know exactly what he means. The fruit of persimmon, which is about $\frac{3}{4}$ to $1\frac{1}{2}$ inches long and wide, globe-shaped, orange to orange-purple, often with a whitish coating with an astringent and pucker to taste when green; but when ripe is sweet and edible. The ripe fruit is used to make jam, pudding and nut bread. The dried leaves can be made into a tea rich in vitamin C. At one time, the tea from persimmon was used as a folk remedy for stomachaches, heart-burn, diarrhea, and dysentery.

Persimmon, *Diospyrus virginiana*, is a member of the ebony family and is known as ‘white ebony’. It is the only member of the ebony family to be found in the US. The small to grows in the central and southern states of the US where it is known as; wood, butter wood, possum wood and Virginia date palm. Persimmon heartwood core with variegated streaks of yellow-brown, orange- or black. But the wider sapwood it off-white with a gray tint, and with a fine even texture. It is the sapwood that is valuable and useful. It was once the standard for golf club heads and used for, textile shuttles, bobbins, shoe lasts, tool handles, spools, musical instruments and miscellaneous articles of turnery because of its toughness, hardness and ability to retain a smooth surface even after prolonged use. It can be difficult to work, but turns well and finishes to a high polish. It does not glue well but is high in shock resistance and the fibers do not fray.



medium sized tree
bara bara, boa
has a very small
brown, dark brown
straight grained

Persimmon can be difficult to find. It is not available commercially and can be expensive. It can be found in ‘out-of-the-way places’ such as small local sawmills. The wood is difficult to season and shrinks when drying.

You can read more about Persimmon at; [Persimmon on the Wood-database](#) and [Persimmon on Wikipedia.org](#).

Written by – Mel Bryan

PROGRAM HIGHLIGHTS

NWT Treasurer Chip Siskey presented a program on a “Captive Ring Goblet” turning for the June 2019 meeting. Shown below are some photos showing Chip making the goblet.



Setup for the blank requires a good live center in the tailstock.

Once the Blank has ben turned round and uniform to diameter, the actual shaping of the turning begins.



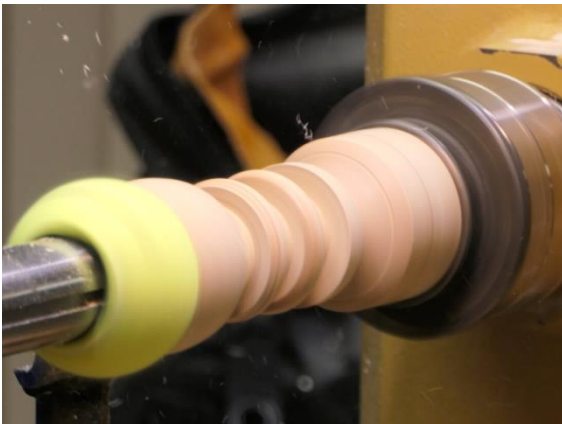
After beginning the shaping and location for the length of the “bowl” part of the goblet, hollowing begins. On the left the tailstock has been moved back to expose the end of the blank. On the right, Chip hollows out the container part.



Chip explained the need for a special tailstock attachment to stabilize the just-turned hollow part while other turning takes place.

Note the attachment in the right picture.

This is the first of two attachments used by Chip on this turning.



Note here the second attachment to the tailstock. This would further stabilize the hollow part of the turning while supporting the blank as the rings are finish shaped and released on the stem.

See you in July on the 11th. This is due to the Independence Day holiday on our regular meeting day.

Remember to bring your Show and Tell items.

Damage Control Plugs

Thanks to everyone who's helped with our plug orders. Our inventory is getting low so we will be asking for help getting restocked. There will be boxes of blanks at the next meeting. Please consider taking a box home and turning them by the following meeting. Here's a table with the plug dimensions for reference.

It's also on the CLUB NEWS tab of the club website at


<http://www.northlandwoodturners-kc.com/>

Plug	Lg Dia	Length	Sm Dia
#1	1 1/2	7	5/8
#2	2 1/4	4	1 1/4
#3	3 1/4	3 1/2	2 1/8
#4	4 1/4	5 3/4	2 3/4
#5	6 1/2	6	4 3/4



WOODCRAFT
Helping You Make Wood Work

8645 Bluejacket Rd
Lenexa, KS 66214
(913) 599-2800
M-F 9-9 · Sat 9-6 · Sun 9-5
Are you signed up for our email specials??



Woodchips
by Chip

Custom Woodturning and
Woodturning Instruction

Robert "Chip" Siskey
Woodchipsbychip@yahoo.com
(816) 858-3080



METRO
HARDWOODS, INC.

Jeff Edemann, Store Manager
4243 S Noland Rd Independence, MO 64055
816-373-1710

CRAFT SUPPLIES USA
— THE WOODTURNERS CATALOG —

1287 E. 1120 S.
Provo, UT 84606
800-551-8876
M-F, 7am-6pm, MST
Check out the Club Specials every month.
Enter "NorthlandWoodturners" when asked for club name.



Schutte
LUMBER CO.
A Landmark Company
Since 1880

816-892-3398
800-456-2148
Fax 816-753-0250

3001 Southwest Boulevard
Kansas City, MO 64108-3616
www.SchutteLumber.com

Sales@SchutteLumber.Com
816-892-3398 Phone 816-753-0250 Fax

REMINDER:

The annual dues for **2019** are **\$10.**

Checks can be made payable to
Northland Woodturners.